



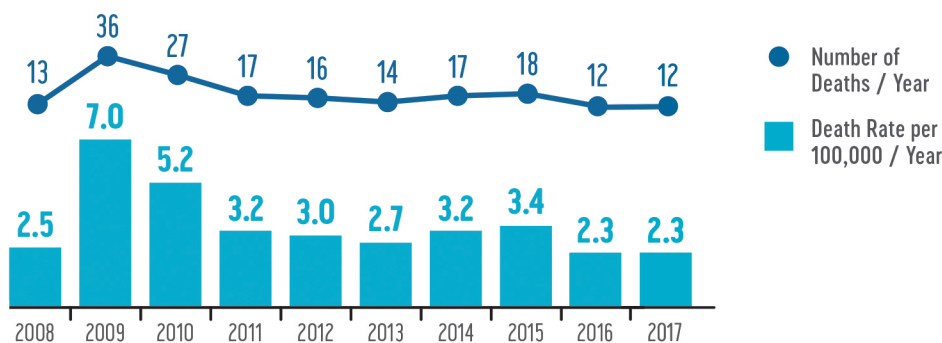
# DROWNING Report

Prepared for the Lifesaving Society by the Drowning Prevention Research Centre Canada

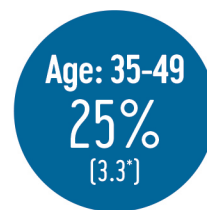
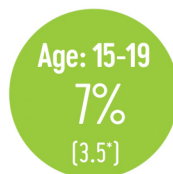
This infographic summarizes the most recent data on water-related fatalities available from the Office of the Chief Medical Examiner for Newfoundland and Labrador.

With the exception of the first chart, all data refers to the most current five-year period, 2013-2017.

NEWFOUNDLAND AND LABRADOR WATER-RELATED FATALITIES AND DEATH RATES, 2008-2017

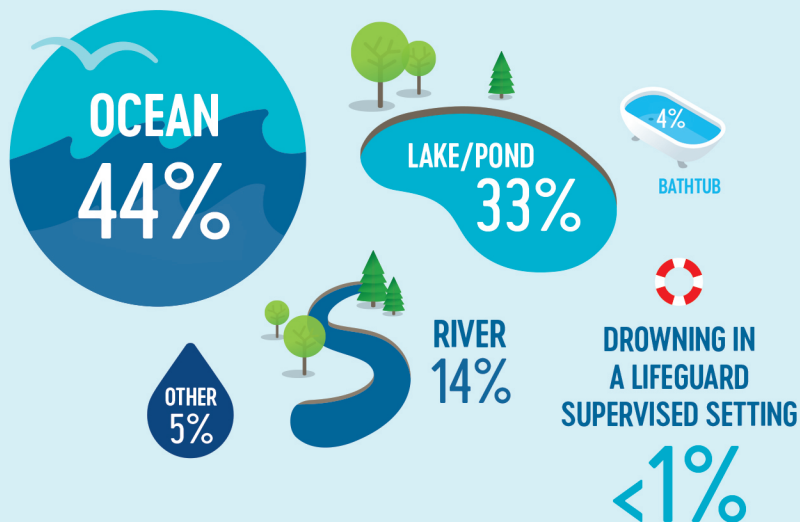


## WHO IS DROWNING?

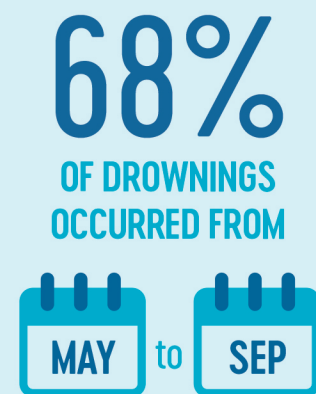


\* Death Rate per 100,000 / Year

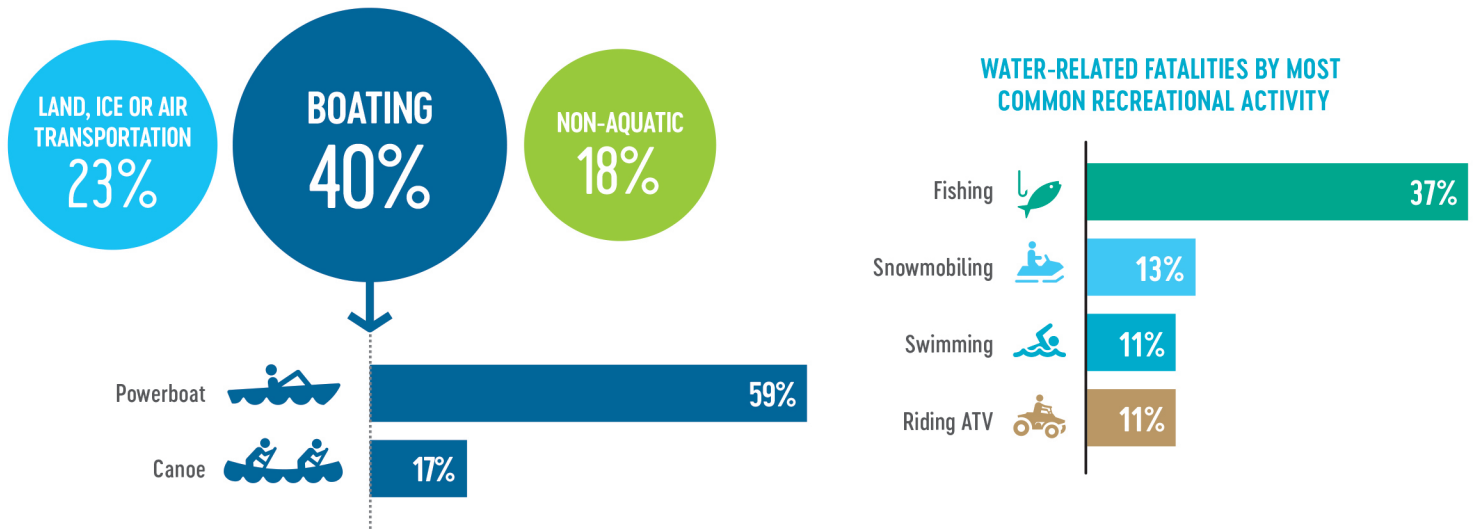
## WHERE?



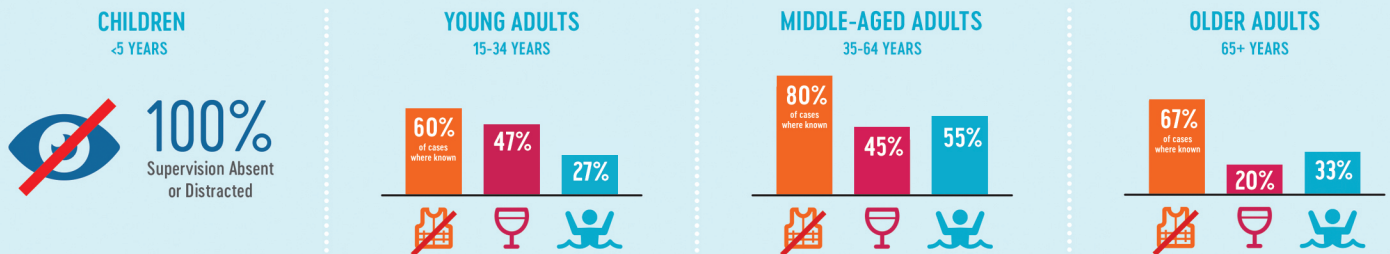
## WHEN?



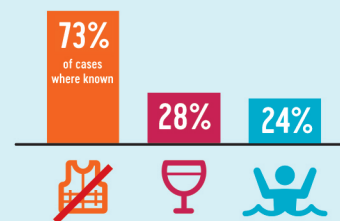
# ? WHAT WERE THEY DOING?



## ! WHY? RISK FACTORS



### BOATING



#### METHODS:

Water-related death data is extracted from the office of the Chief Coroner or Medical Examiner for each province and territory. Data is collected for all deaths resulting from incidents "in, on or near" water. "Near water" incidents were included if the intent was closely related to water-based recreational, vocational or daily living activity. The data includes only unintentional deaths, not deaths due to natural causes, suicide, or homicide.

#### ACKNOWLEDGEMENTS:

We gratefully acknowledge the support, co-operation and efforts of:

- The Chief Coroner's and Medical Examiner's Offices in each province/territory, who permitted and facilitated confidential access to coroner's reports on unintentional water-related deaths.
- The volunteers who contributed their time and energy to extract data from the files.

The Drowning Prevention Research Centre is the lead agency for drowning and water-incident research in Canada.  
Tel: 416-490-8844, Email: [experts@drowningresearch.ca](mailto:experts@drowningresearch.ca)

Lifesaving Society Newfoundland and Labrador  
Tel: 709-576-1953, Email: [info@lifesavingnl.ca](mailto:info@lifesavingnl.ca)  
[www.lifesavingnl.ca](http://www.lifesavingnl.ca)